



Outperform every day.™

Project:

Item Number:

Quantity:

Flush Mount Dispensers and Holders

The Vollrath Company, L.L.C.

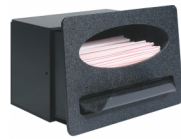
FLUSH MOUNT DISPENSERS AND HOLDERS



FMN-1



FMHVN-1



FMS-1A



FMS-3



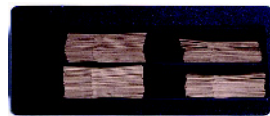
FMT-1



MT-1.5



MR-1.5



MB-2



TT-1

Flush Mount Dispensers and Holders

DESCRIPTION

Vollrath's line of Flush Mount Dispensers and Holders keep busy self-serve stations neat and organized, making it easy for customers to find what they need. The multi-compartment dispensers provide maximum storage in a small footprint.

MODELS

- FMN-1** Napkin Dispenser, Accommodates 5"H x 6½"W (12.7H x 16.5W cm) Folded Napkin
- FMHVN-1** Napkin Dispenser, High Volume, Accommodates 5"H x 6½"W (12.7H x 16.5W cm) Folded Napkin
- FMHVN-2** Napkin Dispenser, High Volume, Accommodates 3½"H x 6½"W (8.9H x 16.3W cm) Folded Napkin
- FMNL-1** 1 Napkin Dispenser and 1 Lid Holder, Horizontal Accommodates 5"H x 6½"W (12.7H x 16.5W cm) Folded Napkin
- FMS-1A** Unwrapped, One-At-A-Time Straw Dispenser, up to 8" (20.3 cm) Long x ¼" (.64) Diameter
- FMS-2A** Stir Stick Dispenser, up to 6" (15.2 cm) Long x ⅛" (.3) Diameter
- FMS-3** Wrapped Straw Holder, 8-10" (20.3 - 25.4 cm) Straws
- FMS-4** Wrapped Straw Holder, 10-12" (25.4 - 30.5 cm) Straws
- FMS-5** Stir Stick Holder
- FMT-1** Waxed Tissue Dispenser (Holds most mini cartons)
- MB-1** Bag Dispenser, Two Pocket
- MB-2** Bag Dispenser, Four Pocket
- MR-1.5** Trash Receptacle Door with Recycled Logo, Medium
- MR-2** Trash Receptacle Door with Recycled Logo, Large
- MT-1** Trash Receptacle Door, Small
- MT-1.5** Trash Receptacle Door, Medium
- MT-2** Trash Receptacle Door, Large
- TT-1** Trash Receptacle Insert, Small
- TT-2** Trash Receptacle Insert, Large

FEATURES

- Impact-resistant molded thermoplastic construction
- Mounts flush with counter
- Includes mounting screws

Napkin Dispensers

Feature	FMN-1	FMHVN-1	FMHVN-2	FMNL-1
Spring loaded for continuous dispensing	yes	yes	yes	yes
Napkin restricter (face plate) reduces waste and easy refilling	no	yes	yes	no
Mounting	Horizontal or Vertical			Horizontal
Capacity	90	500	500	100

Straw Dispensers

- FMS-1A is a 2-box system for easy loading
- FMS-3, FMS-4 and FMS-5 feature two compartments for different size straws

Stir Stick Dispenser

- FMS-2A is a 2-box system for easy loading

Waxed Tissue Dispenser

- 2-box system for easy loading
- Accommodates most mini-size wax tissue cartons

Bag Dispensers

- Available in two or four pocket configurations

Trash Receptacle Door and Inserts

- Place trash receptacles in easy to locate and use locations

Due to continued product improvement, please consult www.vollrath.com for current product specifications.

WARRANTY: All models shown come with Vollrath's standard warranty against defects in materials and workmanship. For full warranty details, please refer to www.vollrath.com.

Approvals	Date



Outperform every day.™

www.vollrath.com

The Vollrath Company, L.L.C.
 1236 North 18th Street
 Sheboygan, WI 53081-3201 U.S.A.
 Customer Service: 800.628.0830
 Canada Customer Service: 800.695.8560
 Main Fax: 800.752.5620 or 920.459.6573

Technical Services: 800.628.0832
 Technical Services Fax: 920.459.5462

FLUSH MOUNT DISPENSERS AND HOLDERS

SPECIFICATIONS

Item	Description	Dimensions IN (CM)				Shipping Weight LB (KG)
		Height	Width	Depth	Cutout Size	
FMN-1	Napkin Dispenser, Accommodates 5"H x 6½"W (12.7H x 16.5W cm) Folded Napkin	8½ (21.6)	6¼ (15.9)	5⅝ (13.7)	7⅞ x 5⅝ (19.2 x 13.5)	3 (1.4)
FMHVN-1	Napkin Dispenser, High Volume, Accommodates 5"H x 6½"W (12.7H x 16.5W cm) Folded Napkin	8½ (21.6)	7⅞ (18.1)	19½ (49.5)	7⅝ x 6⅜ (19.4 x 15.7)	3 (1.4)
FMHVN-2	Napkin Dispenser, High Volume, Accommodates 3½"H x 6½"W (8.9H x 16.3W cm) Folded Napkin	8½ (21.6)	5⅝ (14.3)	19½ (49.5)	7⅝ x 4⅞ (19.4 x 11.9)	8 (3.6)
FMNL-1	1 Napkin Dispenser and 1 Lid Holder, Horizontal Accommodates 5"H x 6½"W (12.7H x 16.5W cm) or 5½"H x 6½"W (14H x 16.5W cm) Folded Napkin	8 (20.3)	11⅞ (28)	7½ (19.1)	7⅞ x 10⅞ (17.9 x 25.7)	5 (2.3)
FMS-1A	Unwrapped, One-At-A-Time Straw Dispenser, 8"	7⅞ (18.6)	10⅝ (27)	5⅝ (13.7)	6⅝ x 9⅝ (16.8 x 24.4)	5 (2.3)
FMS-2A	Stir Stick Dispenser, 6"	7⅞ (18.6)	8¼ (21)	5⅝ (13.7)	7⅞ x 6⅜ (18.6 x 14.3)	6 (2.7)
FMS-3	Wrapped Straw Holder, 8-10" Straws	7¼ (18.4)	6½ (16.5)	7½ (19.1)	6⅝ x 5⅝ (16.2 x 14.3)	3 (1.4)
FMS-4	Wrapped Straw Holder, 10-12" Straws	7¼ (18.4)	6½ (16.5)	13 (33)	6⅝ x 5⅝ (16.2 x 14.3)	4 (1.8)
FMS-5	Stir Stick Holder	7¼ (18.4)	6½ (16.5)	5⅝ (14.9)	6⅝ x 5⅝ (16.2 x 14.3)	3 (1.4)
FMT-1	Waxed Tissue Dispenser (Holds most mini cartons)	8 (20.3)	8¼ (21)	3½ (8.9)	7⅞ x 7⅞ (17.9 x 18.6)	3 (1.4)
MB-1	Bag Dispenser, Two Pocket	7½ (19.1)	10⅝ (27)	11¼ (28.6)	6⅞ x 9⅞ (16.7 x 24.6)	4.2 (1.9)
MB-2	Bag Dispenser, Four Pocket	7½ (19.1)	17⅝ (44.8)	11¼ (28.6)	6⅞ x 16⅞ (16.7 x 42.4)	5 (2.3)
MR-1.5	Trash Receptacle Door with Recycled Logo, Medium	7½ (19.1)	13¼ (33.7)	2¼ (5.7)	6⅞ x 12⅞ (16.7 x 31.3)	2 (.9)
MR-2	Trash Receptacle Door with Recycled Logo, Large	7½ (19.1)	17⅝ (44.8)	2¼ (5.7)	6⅞ x 16⅞ (16.7 x 42.4)	2 (.9)
MT-1	Trash Receptacle Door, Small	7½ (19.1)	10⅝ (27)	2¼ (5.7)	6⅞ x 9⅞ (16.7 x 24.6)	2 (.9)
MT-1.5	Trash Receptacle Door, Medium	7½ (19.1)	13¼ (33.7)	2¼ (5.7)	6⅞ x 12⅞ (16.7 x 31.3)	2 (.9)
MT-2	Trash Receptacle Door, Large	7½ (19.1)	17⅝ (44.8)	2¼ (5.7)	6⅞ x 16⅞ (16.7 x 42.4)	2 (.9)
		Outside Dia.	Inside Dia.			
TT-1	Trash Receptacle Insert, Small	7⅞ (19.4)	6 (15.2)	6 (15.2)	6¼ (17.1)	2 (.9)
TT-2	Trash Receptacle Insert, Large	9¼ (23.5)	8 (20.3)	6½ (16.5)	8⅞ (21.3)	3 (1.4)



Outperform every day.™

www.vollrath.com

The Vollrath Company, L.L.C.
1236 North 18th Street
Sheboygan, WI 53081-3201 U.S.A.
Customer Service: 800.628.0830
Canada Customer Service: 800.695.8560
Main Fax: 800.752.5620 or 920.459.6573

Technical Services: 800.628.0832
Technical Services Fax: 920.459.5462