



Outperform every day.™

# Operator's Manual

## LidSaver™ 2 In-Counter Lid Dispensers



Thank you for purchasing this Vollrath equipment. Before operating the equipment, read and familiarize yourself with the following operating and safety instructions. **SAVE THESE INSTRUCTIONS FOR FUTURE REFERENCE.** Save the original box and packaging. Use this packaging to ship the equipment if repairs are needed.

### SAFETY PRECAUTIONS

To ensure safe operation, read the following statements and understand their meaning. This manual contains safety precautions which are explained below. Please read carefully.

#### **WARNING**

Warning is used to indicate the presence of a hazard that will or can cause severe personal injury or death.

#### **CAUTION**

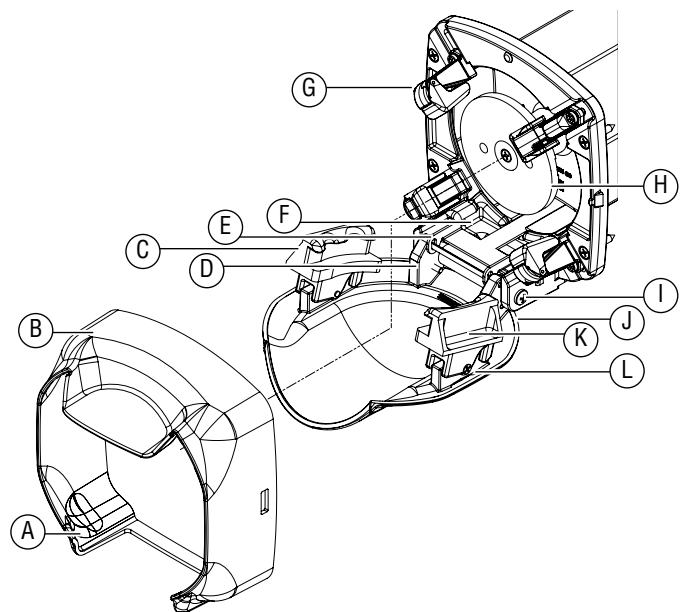
Caution is used to indicate the presence of a hazard that will or can cause minor or major personal injury if the caution is ignored.

**NOTICE:** Notice is used to note information that is important but not hazard-related.

Item No.	Description
LS02I	Dispenses lids 3-1/4" - 4" (8.2 - 10.1 cm)
LS02P	Dispenses lids 4-1/16" - 4-3/4" (10.3 - 12 cm)

**NOTICE:** Each LidSaver™ 2 is factory set to dispense a particular lid style. If you change lid manufacturers or sizes, your LidSaver™ 2 will need to be modified. Vollrath offers lid change out kits that are easy to install. Visit [www.Vollrath.com](http://www.Vollrath.com) for more information

### OVERVIEW



- A Door Open Button.** Keeps the door open for easy loading.
- B Bezel/Housing**
- C "A" Claw.** Marked with lid manufacturer and model no.
- D Door Spring**
- E Spring Pin**
- F Overfill Protection Bracket**
- G Pivoting Pager Flipper.** For smooth lid loading.
- H Piston Lid Plate**
- I Nylon Door Sheer Screws.** (10-24 x 3/8 R.H.M.S.)
- J Door**
- K "B" Claw.** Marked with lid manufacturer and model no.
- L Nylon Lid Claw Pivot Sheer Screws.** (6-32 x 3/4 F.H.M.S.)

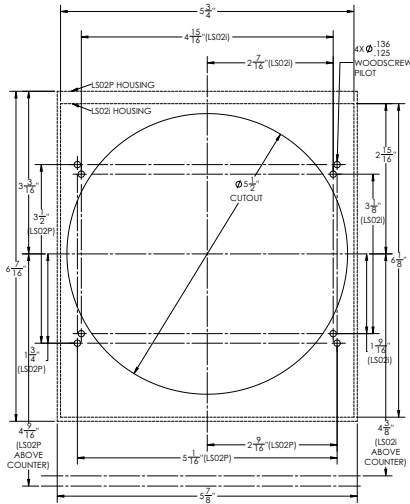
Please register your product at [Vollrath.com](http://Vollrath.com)

# IN-COUNTER INSTALLATION

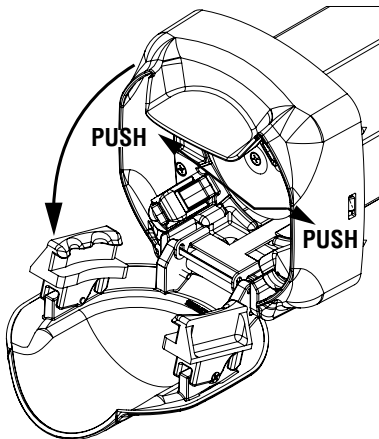
## Tools Needed

- #2 Phillips Screwdriver
- Drill
- 0.125" – 0.136" Drill Bit (For #8 Pilot Hole)
- Sabre Saw or Hand Router
- Cabinet Cut-Out Template (provided)
- (4) #8 x 1.00" Flat Head Wood Screws (included)

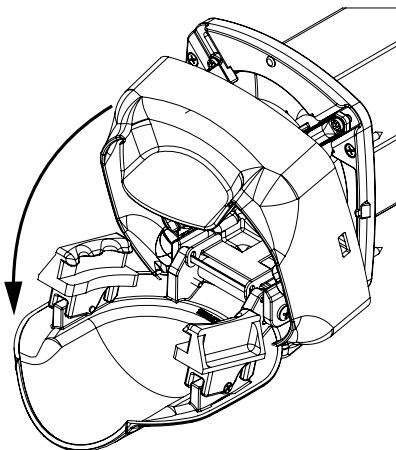
1. Use the supplied cabinet cut-out template to cut the LidSaver™ 2 tube hole and drill four mounting screw pilot holes.



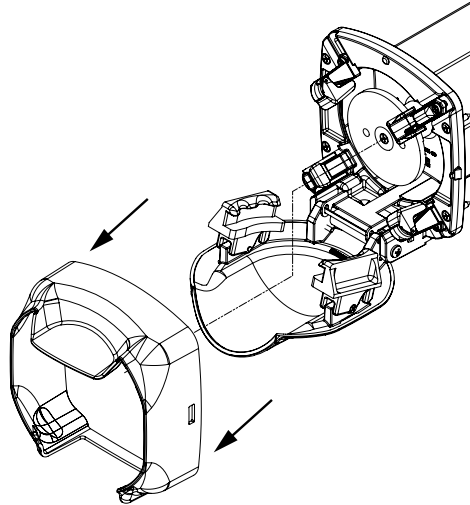
2. Remove the bezel/housing by opening the door and pushing the sides of the housing to clear the snaps.



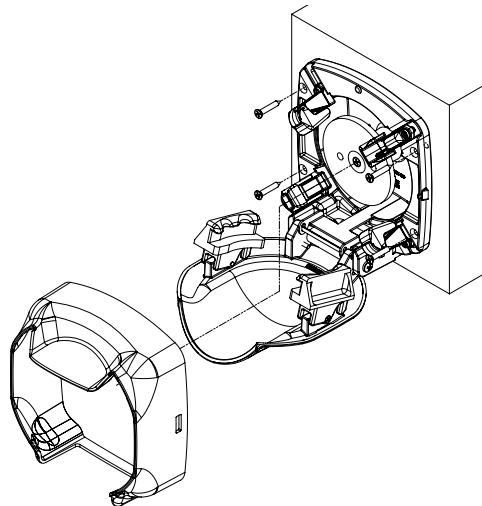
3. Pull the bezel/housing forward and tilt it downward allowing it to flex around the edge of the open door.



4. Remove the bezel/housing.



5. Mount the LidSaver™ 2 into your cabinet using the four #8 flat head wood screws.



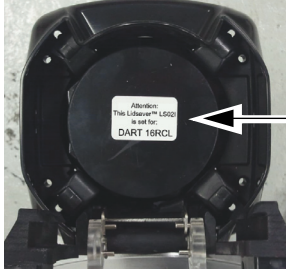
6. Replace the bezel/housing.

---

## LOADING

---

1. Before loading lids, verify your lids match the manufacturer and lid number noted on the lid plate label.



2. Pull the door open past 90 degrees. Push the button on the side of the housing. This will enable the door to stay open for easy loading.



3. Separate the lids prior to loading to release any lids that may have been pressed together during packaging.
4. Load lids or cups.



- Lids must be loaded with the front of the lid stack facing forward.

**NOTICE: DO NOT overstock lids. Compressing lids may result in dispensing problems.**

5. If dispensing tabbed lids, align all lid tabs either up (12:00) or down (6:00) to avoid interference with the lid claws.

**NOTICE: Each LidSaver™ is factory set to dispense a particular lid. If you change manufacturers or sizes, your LidSaver™ 2 will need to be modified. Vollrath offers lid change out kits that are easy to install. Visit [www.Vollrath.com](http://www.Vollrath.com) for more information.**

6. Gently pull door open past 90 degrees and then release the door. It will automatically close.

---

## CLEANING

---

Regularly clean the inside and outside of your LidSaver™.

1. Remove all lids from LidSaver™.
2. Remove the bezel/housing (refer to installation instructions).
3. Wipe the interior and exterior with a cotton cloth and warm soapy water.
4. Saturate each pager assembly with warm soapy water several times. Flex the flipper portion of the pager to verify flippers operate freely.
5. Push the piston to the back of the tube to expose the bottom of tube. Wipe the bottom of the tube.

---

## MAINTENANCE

---

### Tune-Up Your LidSaver™

When lids do not dispense correctly your LidSaver™ may need to be adjusted. Order a tune-up kit. See [www.Vollrath.com](http://www.Vollrath.com) for ordering information.

---

## TROUBLESHOOTING

---

Problem	Might be Caused By	Course of Action
More than one lid releases when opening door	Your lid may be incorrect for your LidSaver™ 2 settings.	Read label on “lid plate”. If this does not match your lids, order a lid change kit” to reset your LidSaver™ 2 for your lid.
	LidSaver™ 2 may be overfilled with lids. When lids are compressed too tightly from overstocking they will not dispense well. Instruct staff to not overstock lids.	Remove lids and flake the stack. Avoid overstocking lids when loading.
	Pager flipper not returning to proper working position after loading lid stack.	Using warm soapy water, thoroughly saturate pager and flipper until flipper operates freely.
	Pager not securely fastened down.	Grasp each pager to determine if it is loose and allows movement within the adjustment slot. Order a tune-up kit to set these components accurately.
Inconsistent dispensing	Due to manufacturing defects, damaged lids or poorly stacking lid types, some lids may not dispense as planned. Under these rare conditions your customer is still able to easily retrieve a lid.	

---

## SERVICE AND REPAIR

---

Serviceable parts are available on [Vollrath.com](http://Vollrath.com).

To avoid serious injury or damage, never attempt to repair the unit or replace a damaged power cord yourself. Do not send units directly to The Vollrath Company LLC. Please contact Vollrath Technical Services for instructions.

When contacting Vollrath Technical Services, please be ready with the item number, model number (if applicable), serial number, and proof of purchase showing the date the unit was purchased.

---

## WARRANTY STATEMENT FOR THE VOLLRATH CO. L.L.C.

---

This warranty does not apply to products purchased for personal, family or household use, and The Vollrath Company LLC does not offer a written warranty to purchasers for such uses.

The Vollrath Company LLC warrants the products it manufactures or distributes against defects in materials and workmanship as specifically described in our full warranty statement. In all cases, the warranty runs from the date of the end user's original purchase date found on the receipt. Any damages from improper use, abuse, modification or damage resulting from improper packaging during return shipment for warranty repair will not be covered under warranty.

For complete warranty information, product registration and new product announcement, visit [www.vollrath.com](http://www.vollrath.com).



Outperform every day.™

[www.vollrath.com](http://www.vollrath.com)

### The Vollrath Company, L.L.C.

1236 North 18th Street  
Sheboygan, WI 53081-3201 U.S.A.  
Main Tel: 800.624.2051 or 920.457.4851  
Main Fax: 800.752.5620 or 920.459.6573  
Customer Service: 800.628.0830  
Canada Customer Service: 800.695.8560

### Technical Services

[techservicereps@vollrathco.com](mailto:techservicereps@vollrathco.com)  
Induction Products: 800.825.6036  
Countertop Warming Products: 800.354.1970  
All Other Products: 800.628.0832