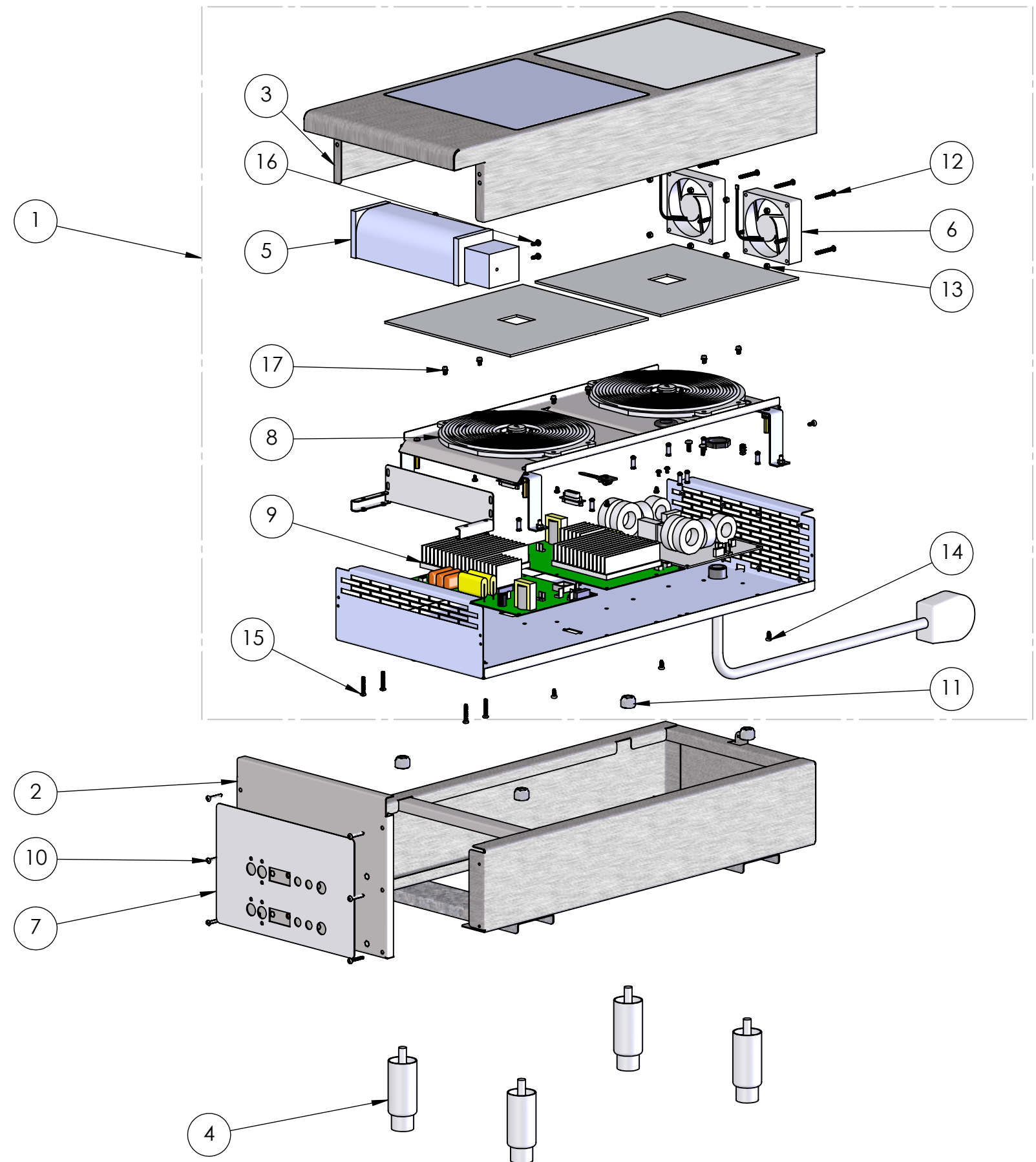


REPLACEMENT PARTS

| ITEM NO. | PART NUMBER | DESCRIPTION | QTY. |
|----------|-------------|--------------------------------------|------|
| 1 | 4161105-2 | POWER UNIT SERVICE ASSEMBLY | 1 |
| 2 | 4161202-2 | FRONT PANEL ASSEMBLY, 2 HOB DIGITAL | 1 |
| 3 | 352366-2 | TOP ASSEMBLY, GLASS | 1 |
| 4 | 2351601-1 | LEG | 4 |
| 5 | 250911-1 | AC BLOWER | 1 |
| 6 | 352367-2 | DC FAN KIT | 1 |
| 7 | 23558-1 | CONTROL PANEL OVERLAY, 2 HOB DIGITAL | 1 |
| 8 | 352365-1 | 912/924 EMI & POWER BOARD KIT | 1 |
| 9 | 2351616-1 | INDUCTION COIL | 2 |

FASTENERS (GENERAL SPECIFICATION)

| ITEM NO. | DESCRIPTION |
|----------|-------------------------------------|
| 10 | SCREW, M4 X 25MM, SELF-TAPPING |
| 11 | NUT, 1/2"-13 UNC, NYLOCK |
| 12 | SCREW, M4x.7 X 35 MM |
| 13 | NUT, M4 HEX, NYLOCK |
| 14 | SCREW, M4 X 10MM, SELF-TAPPING |
| 15 | SCREW, M4x.7 X 25MM, W/ LOCK WASHER |
| 16 | SCREW, M4x.7 X 12MM, W/ LOCK WASHER |
| 17 | SCREW, M4x.7 x 8MM LG |



OPENING THE UNIT VOIDS WARRANTY