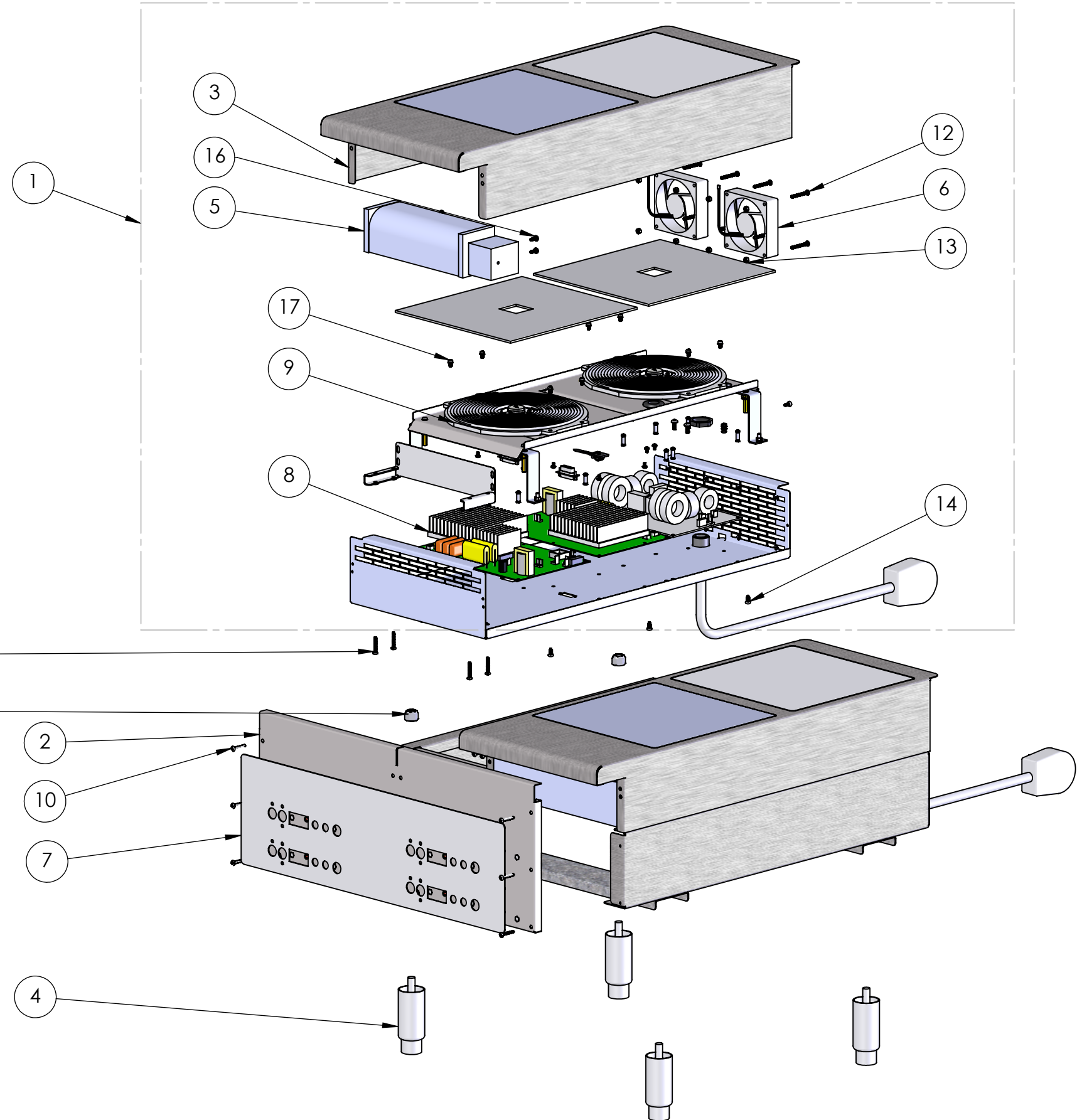


REPLACEMENT PARTS

ITEM NO.	PART NUMBER	DESCRIPTION	QTY.
1	4161105-2	POWER UNIT SERVICE ASSEMBLY	2
2	4161402-2	FRONT PANEL ASSEMBLY, 4 HOB DIGITAL	1
3	352366-2	TOP ASSEMBLY, GLASS	2
4	2351601-1	LEG	4
5	250911-1	AC BLOWER	2
6	352367-2	DC FAN KIT	2
7	23577-1	CONTROL PANEL OVERLAY, 4 HOB DIGITAL	1
8	352365-1	912/924 EMI & POWER BOARD KIT	1
9	2351616-1	INDUCTION COIL	2

**FASTENERS
(GENERAL SPECIFICATION)**

ITEM NO.	DESCRIPTION
10	SCREW, M4 X 25MM, SELF-TAPPING
11	NUT, 1/2"-13 UNC, NYLOCK
12	SCREW, M4x.7 X 35 MM
13	NUT, M4 HEX, NYLOCK
14	SCREW, M4 X 10MM, SELF-TAPPING
15	SCREW, M4x.7 X 25MM, W/ LOCK WASHER
16	SCREW, M4x.7 X 12MM, W/ LOCK WASHER
17	SCREW, M4x.7 x 8MM LG



OPENING THE UNIT VOIDS WARRANTY