



# Configurable Stainless Steel Cabinets with LidSaver™ 3 Lid Dispensers List Prices



| Step 1<br>Select Cabinet Height |               |                |
|---------------------------------|---------------|----------------|
| Number of Positions             | Code          | USD List Price |
| 1 Vertical                      | <b>K58821</b> | 375.50         |
| 2 Vertical                      | <b>K58822</b> | 415.90         |
| 3 Vertical                      | <b>K58823</b> | 512.60         |
| 4 Vertical                      | <b>K58824</b> | 626.00         |

| Step 2<br>Select components. Add component code for each pocket. Start with bottom pocket. |                     |
|--|---------------------|
| Description  | Component Type Code |
| LidSaver 3   | <b>L</b>            |
| Cup Dispenser  | <b>C</b>            |
| Straw Dispenser  | <b>S</b>            |

**Step 3**  
Assign Component Codes to Positions  
(See Component Matrices below for specific selections and price)

Place each component code in a position in the cabinet, from bottom to top.

4

3

2

1

If selecting a straw pocket, it must be in position 1.

Your Selection  -  -  -

USD List Price  +  +  +  =

| Position 1           | Position 2           | Position 3           | Position 4           |
|----------------------|----------------------|----------------------|----------------------|
| <input type="text"/> | <input type="text"/> | <input type="text"/> | <input type="text"/> |
| <input type="text"/> | <input type="text"/> | <input type="text"/> | <input type="text"/> |

**EXAMPLE**

Your Selection  -  -  -  -  -  =

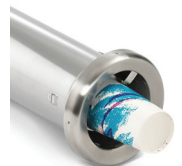
USD List Price  +  +  +  +  =

## Component Matrices

| (L)<br>Lid            |           |                | (C)<br>Cup                  |           |                | (S)<br>Straw<br>(Must be in #1 position) |          |                |
|-----------------------|-----------|----------------|-----------------------------|-----------|----------------|--|----------|----------------|
| Manufacturer Part No. | Code      | USD List Price | Manufacturer Part No.       | Code      | USD List Price | Part No.                                 | Code     | USD List Price |
| Berry™ DLT1310 Domed  | <b>AB</b> | 306.40         | Dart® 32SLR                 | <b>AQ</b> | 306.40         | INC-80                                   | <b>A</b> | 178.20         |
| Berry™ DLT1310SS      | <b>AC</b> |                | Dixie® 9542                 | <b>AR</b> |                | CADJ-3                                   | <b>D</b> | 210.20         |
| Berry™ DLT1402 Domed  | <b>AD</b> |                | Dixie® 955                  | <b>JY</b> |                |  |          |                |
| Berry™ DLT1402SS      | <b>AE</b> |                | Dixie® TP9542               | <b>AS</b> |                |  |          |                |
| Berry™ DLT1408 Domed  | <b>AF</b> |                | Dixie® TP9550               | <b>JZ</b> |                |  |          |                |
| Berry™ DLT1408SS      | <b>AG</b> |                | International Paper LCRS 32 | <b>AT</b> |                |  |          |                |
| Dart® 16EL            | <b>AJ</b> |                | International Paper LCTS 44 | <b>AU</b> |                |  |          |                |
| Dart® 16LCDH          | <b>AK</b> |                | Sweetheart® LGX12R          | <b>AY</b> |                |  |          |                |
| Dart® 16RCL           | <b>AL</b> |                | Solo® 626                   | <b>AZ</b> |                |  |          |                |
| Dart® 16SL            | <b>AM</b> |                | Solo® DL626                 | <b>BB</b> |                |  |          |                |
| Dart® 20SL            | <b>AN</b> |                | Solo® DLR642                | <b>BC</b> |                |  |          |                |
| Dart® 20SLR           | <b>AO</b> |                | Solo® LD16A                 | <b>BD</b> |                |  |          |                |
| Dart® 32SL            | <b>AP</b> |                |                             |           |                |  |          |                |



INC-80



CADJ-3

Additional lids are available. Find the full Dispenser Code Lookup Tables file on Vollrath.com

Dart, Solo and Sweetheart are registered trademarks of Dart Container Corporation. Berry is a trademark of Berry Plastics Corporation. Dixie is a registered trademark of Georgia-Pacific. International Paper is a registered trademark of International Paper.

**NOTE:** LidSaver™ items are custom products and are non-returnable.

## Effective June 1, 2022

(supersedes all previously printed price lists)

Prices in US dollars. Subject to change without notice.  
Taxes are not included in prices.