



Outperform every day.™

**Project:**  
**Item Number:**  
**Quantity:**

**INTERNATIONAL MIRAGE® 16" X 16" DECORATIVE INDUCTION BUFFET WARMERS**



**DESCRIPTION**

Maximize your menu offerings without maxing out your electrical capacity with the Mirage® 16" x 16" Decorative Induction Buffet Warmers. Decorative glass adds elegance to the presentation. Glass can be customized; contact your Vollrath representative. The warmers can be interconnected to one electrical outlet, which simplifies the planning and management of power cords, access to outlets and load capacity. Available in countertop and drop-in styles, the warmers are ideally suited for buffet and catering operations. These induction buffet warmers are designed to work with a maximum of one induction-ready chafer or serving vessel.

The warmers are equipped with a variety of safety features including:

- Over-heat protection
- Small-article detection
- Pan auto-detection function
- Empty-pan shut-off

**Note: Made to order. Orders cannot be canceled or returned.**

**WARRANTY**

All models shown come with Vollrath's standard warranty against defects in materials and workmanship. For full warranty details, please refer to [www.Vollrath.com](http://www.Vollrath.com).

**AGENCY CERTIFICATIONS**



Due to continued product improvement, please consult [www.vollrath.com](http://www.vollrath.com) for current product specifications.

**ITEMS**

Item No.	Model	Description
59503LN7502	59503	Countertop, Linen Glass, Black
59503LN8502		Countertop, Linen Glass, Champagne
59503LNDW02		Drop-in, Linen Glass
59503SB7502		Countertop, Sunburst Glass, Black
59503SB8502		Countertop, Sunburst Glass, Champagne
59503SBDW02		Drop-in, Sunburst Glass

**FEATURES**

- Decorative glass is durable and adds elegance to any presentation
- Connect up to three warmers with the included interconnect cords  
The center warmer must connect to the electrical outlet
- Connect up to seven warmers (at max power) to a 10 amp circuit
- Storage compartment under warmer conveniently holds cords
- Touch controls
- Four power levels
- LED indicator lights on the control panel
- Tempered ceramic glass top is strong, non-porous, easy to clean
- Low profile design focuses on the food
- Drop-in warmers install overhanging countertop or countersunk
- 6 ft. (183 cm) cord with plug
- 30 in. (76.2 cm) interconnect cord
- 5 ft. (152.4 cm) USB cable on control box for drop-in warmers

**ACCESSORIES**

- 59145 Carrying Case
- 4644080 Non-Slip Mat - 9" x 8" (22.9 x 20.3 cm)
- 4644070 Non-Slip Mat - 16" x 8" (40.6 x 20.3 cm)

**IMPORTANT**

- This appliance is intended for use with induction-ready serving vessels.
- Countertop models require a distance equal to the height of the feet of the warmer.
- Drop-in models require a minimum of 2" (5 cm) of space between all four sides of the induction warmer and any surrounding surface, and a minimum 12" (30.5 cm) between the bottom of the induction warmer and any surrounding surface.
- Control box for drop-in models requires a minimum of 4" (10 cm) behind the control box and any surrounding surface.
- All models require unrestricted intake and exhaust air ventilation for proper operation of the controls. The maximum intake temperature must not exceed 110°F (43°C). Temperatures are measured in ambient air while all appliances in the kitchen are in operation.

Approvals	Date

The Vollrath Company, L.L.C. Headquarters  
1236 North 18th Street  
Sheboygan, Wisconsin  
53081-3201 USA  
Main Tel: 800-624-2051 or 920-457-4851  
Main Fax: 800-752-5620 or 920-459-6573  
Canada Customer Service: 800-695-8560  
Tech Services: [techservices@vollrathco.com](mailto:techservices@vollrathco.com)  
[www.vollrath.com](http://www.vollrath.com)

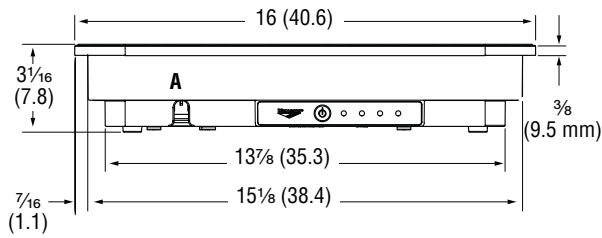
Pujadas  
Ctra. de Castanyet,  
132 P.O. Box 121  
17430 Santa Coloma de Farners  
(Girona) – Spain  
Tel. +34-972-84-32-01  
[info@pujadas.es](mailto:info@pujadas.es)

Vollrath of China  
Vollrath Shanghai Trading Limited  
23A, Time Square Plaza | 500  
Zhang Yang Road  
Pudong, Shanghai 200122  
Tel: 86-21-50589580

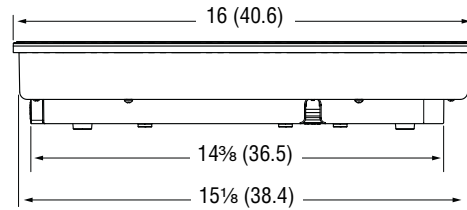
Vollrath de Mexico S. de R.L. de C.V.  
Periferico Sur No. 7980 Edificio 4-E  
Col. Santa Maria Tequepexpan  
45600 Tlaquepaque, Jalisco | Mexico  
Tel: (52) 333-133-6767  
Tel: (52) 333-133-6769  
Fax: (52) 333-133-6768

# INTERNATIONAL MIRAGE® 16" X 16" DECORATIVE INDUCTION BUFFET WARMERS

## DIMENSIONS (Shown in inches (cm))

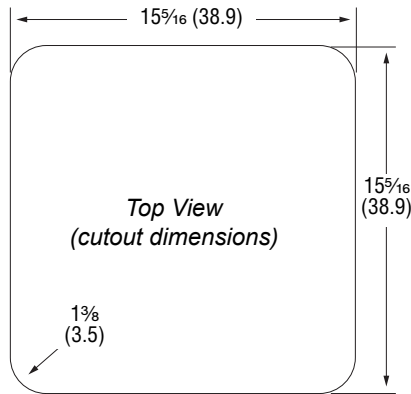
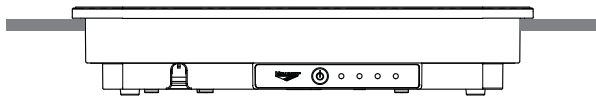


Front View



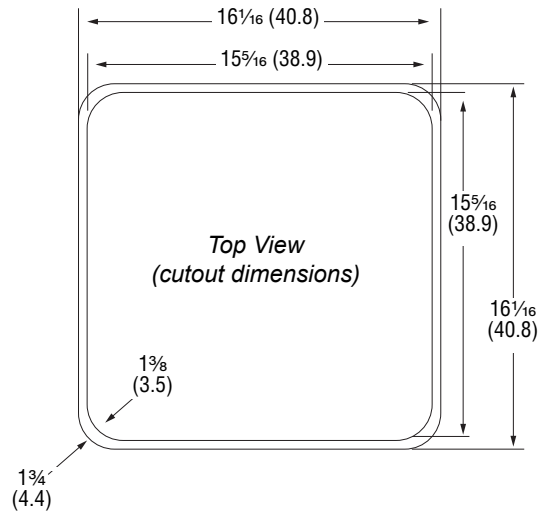
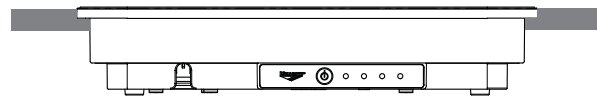
Side View

### Drop-in Model, Overhung Installation



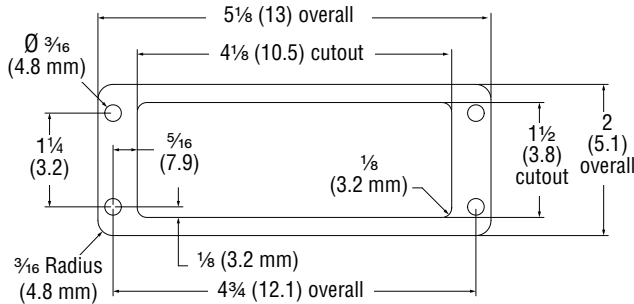
Top View  
(cutout dimensions)

### Drop-in Model, Countersunk Installation



Top View  
(cutout dimensions)

### Control Box (drop-in models only)



Face View



Top View

## SPECIFICATIONS

Item No.	Description	Max Pan Size	Watts	Volts	Amps	Hz	Plug	Weight LB (KG)
59503LN7502	Countertop, Linen Glass, Black Sides	14 (35.6)	300	230	1.3	50/60	Schuko	14 (6.4)
59503LN8502	Countertop, Linen Glass, Champagne Sides							
59503LNDW02	Drop-in, Linen Glass							
59503SB7502	Countertop, Sunburst Glass, Black Sides							
59503SB8502	Countertop, Sunburst Glass, Champagne Sides							
59503SBDW02	Drop-in, Sunburst Glass							

### Receptacle



Schuko

The Vollrath Company, L.L.C. Headquarters  
1236 North 18th Street  
Sheboygan, Wisconsin  
53081-3201 USA  
Main Tel: 800-624-2051 or 920-457-4851  
Main Fax: 800-752-5620 or 920-459-6573  
Canada Customer Service: 800-695-8560  
Tech Services: techservicereps@vollrathco.com  
www.vollrath.com

Pujadas  
Ctra. de Castanyet,  
132 P.O. Box 121  
17430 Santa Coloma de Farners  
(Girona) – Spain  
Tel. +34-972-84-32-01  
info@pujadas.es

Vollrath of China  
Vollrath Shanghai Trading Limited  
23A, Time Square Plaza | 500  
Zhang Yang Road  
Pudong, Shanghai 200122  
Tel: 86-21-50589580

Vollrath de Mexico S. de R.L. de C.V.  
Periferico Sur No. 7980 Edificio 4-E  
Col. Santa Maria Tequepexpan  
45600 Tlaquepaque, Jalisco | Mexico  
Tel: (52) 333-133-6767  
Tel: (52) 333-133-6769  
Fax: (52) 333-133-6768